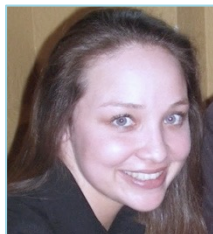


# Modules for Innovative & Diverse Leaders (MIDL)



Advancing Ethnically Diverse Middle Managers, Academics  
& Clinicians to Industry Leadership



**Sandra Alcala, Ph.D., Neuroscience**  
Legislative Assistant  
at U.S. House of  
Representatives



**Amy Belton, Ph.D., Biology**  
Biomedical Life Scientist  
at Leidos, Inc



**Tonye Briggs, Ph.D., Biomedical Engineering**  
Process Development  
Scientist at PCT



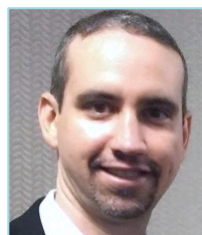
**Vladimir N. Cadet, MPH**  
Manager, Healthcare  
Insights and Analytics at  
ECRI Institute



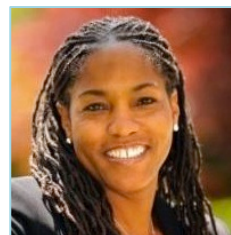
**Tiffany Campolongo, Ph.D., Biological and Environmental Engineering**  
Regional Marketing  
Manager at GenScript



**Jenel Cobb, Ph.D., Cellular and Molecular Pharmacology**  
Senior Project Manager at  
Contravir Pharmaceuticals



**Fernando Cruz-Guilloty, Ph.D., Immunology**  
Research Scientist,  
R&D Lab Supervisor  
at Immucor, Inc.



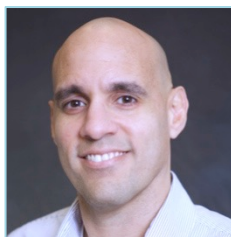
**Aleisha Dobbins, MBA, Ph.D., Biochemistry & Molecular Biology**  
Associate Director,  
Regulatory Affairs  
at BioMarin



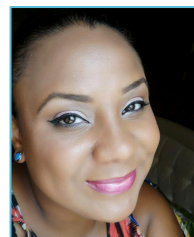
**Wynter Duncanson, Ph.D., Biomedical Engineering**  
Assistant Professor of  
Chemical Engineering at  
Nazarbayev University



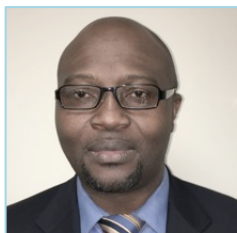
**Ozozoma Foster, Ph.D., Biochemistry**  
Senior Feasibility  
Project Manager  
at inVentiv Health



**Jose Mercado, Ph.D., Neuroscience**  
Group Lead Translational  
Neurobiology at Kineta, Inc.



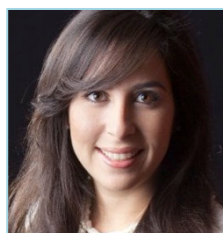
**Onika Murray, Ph.D., Neuroscience**  
Biology Teacher at The  
Spence School



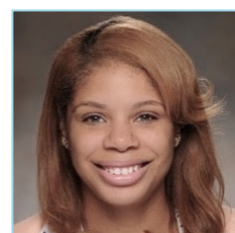
**Leo Njongmeta, Ph.D., Parasite Immunology**  
Section Manager,  
Biologica & Radiation Safety  
at University of Chicago



**Esther Perez, MBA**  
Project Manager  
at Eli Lilly



**Maria Pineda, Ph.D., Biological Sciences**  
CEO at Envisagenics, Inc.



**Jennifer Taylor, Ph.D., Chemistry**  
Public Health Analyst  
RTI International